

INTEXT

Issue 1 April 2019

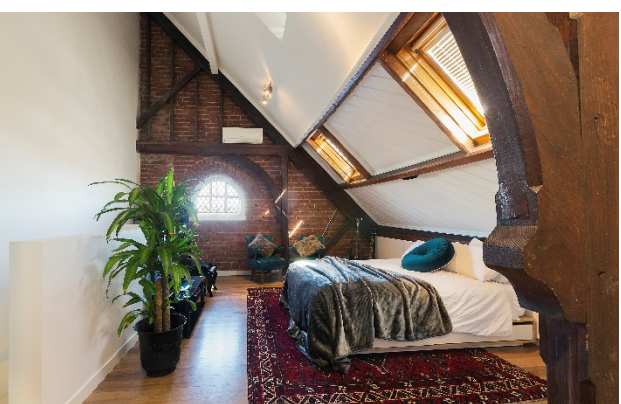
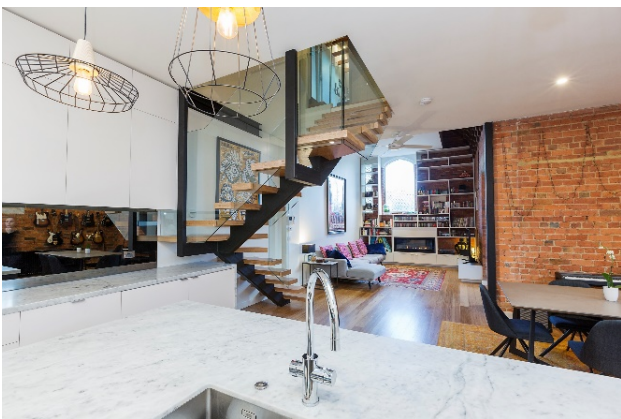


Çheg Architecture

The high design skills of transforming a dreary church into a light-filled apartment

Written by Lee-Ann Joy. Photos by Joanne Manariti.

Responding to their clients brief of ‘Let there be Light’, Çheg Architecture has taken a dull and dreary apartment and transformed the church interior into an uplifting spatial experience of light and warmth.



The moment you pass through the heavy church doors, you enter the parish foyer that showcases the built tradition of brick and wood, providing a historical context to the churches’ original structure.

The blend of old and new sets the scene and highlights the clever mix of traditional and contemporary design, as you meander through the three-story apartment that provides a constant reminder of the skill and sensitive craftsmanship of architect, Çağla (Charla) Akgüner-Taylor.

“the importance of working with the stature of the existing structure is crucial in developing a new contemporary dialogue that is uncompetitive and respectful.”

Leaving the parish foyer, you enter the epicentre of the home into an open space plan that incorporates the lounge, kitchen and dining room.

The open plan hub is abundant with light, warmth and sophistication to detail, reflecting the personalities of the owners, coupled with their artefacts of guitars, art and books.

As you wind your way up through the three levels of the staircase, you can’t help but notice the stair treads that punch through the glass balustrades, or the height of the glass balustrades that almost touches the existing brick, but stands back in gentle respect allowing each construction element to hold its dignity. As well, entry doors to the underside of the ceiling give a slim stately stature, once again reflecting the elegant design aesthetics of the architect.

“it’s the gentle respect to the new elements of the existing church that creates a lightness to an otherwise heavy structure.”

From the use of glass between the historic brick arches to separate and define new spaces; to the curvature of old trusses and window frames meeting new walls and floors; to the visual connection between the three levels of living space, light has been captured with precision and realigned, to give the entire apartment a feeling of grace and dignity.

The visual connection between all levels and capturing light into otherwise dark areas, provide elegance and sophistication within the special moments of traditional structure and new spaces to give the apartment a sophistication and elegance bearing the design trademark of Çheg Architecture.

